



Writtle  
University  
College

# ACCOMMODATION GUIDE



# LIVE IN A RURAL CAMPUS, JUST 2 MILES FROM THE CITY OF CHELMSFORD

**WUC'S PICTURESQUE CAMPUS IS SITUATED IN THE PRETTY VILLAGE OF WRITTLE, JUST 2 MILES FROM THE CITY OF CHELMSFORD. IN ITS "BEST PLACES TO LIVE" GUIDE, THE SUNDAY TIMES VOTED CHELMSFORD AS THE BEST PLACE TO LIVE IN THE EAST OF ENGLAND.**

All of our halls of residence are situated close together on our main campus, so it's easy for you to get around.

Writtle University College offers students the best of rural and urban life with Chelmsford being situated in a great location which is very well connected by train and bus routes – for example, you can easily get to:

London (35 minutes)  
Southend-on-Sea (40 minutes)  
Norwich (1.5 hours)  
Birmingham (2.5 hours)



"It's that sense of community, but also privacy and independence. There's not a right or wrong way to live in halls, it's your own personal space in a building full of lovely people. I don't think I've met anybody I haven't gotten on with, and it just makes life so much easier and accessible. I would definitely recommend it it's an experience you won't get back!"

**Bethany**  
**Former student**



# CONVENIENT, ON-CAMPUS ACCOMMODATION

**OUR 14 HALLS OF RESIDENCE AND 382 STUDENT ROOMS HAVE A COMMUNITY ATMOSPHERE, COMBINED WITH THE CONVENIENCE OF ON-CAMPUS LIVING. OUR ROOMS ARE ARRANGED TO SUIT VARYING PRIORITIES AND BUDGETS.**

Writtle University College isn't just a place to study, it could also be your home. As an offer holder, you're welcome to apply for a place in our halls of residence.

We know that for many of our students, this will be the first time living away from home. Our student accommodation will allow you to enjoy your independence in welcoming, supportive surroundings.

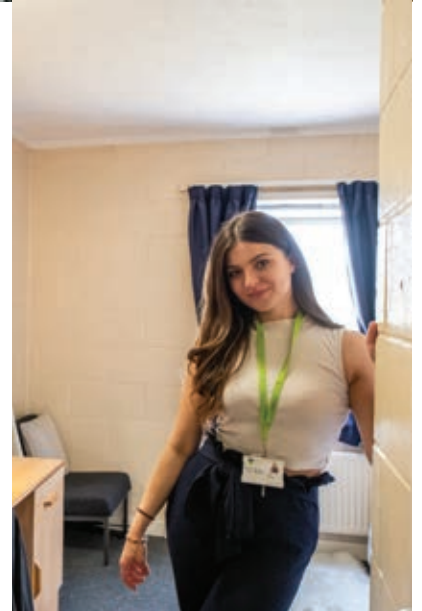
Accommodation is situated close to main amenities such as the Garden Room restaurant, the bar, recreation and fitness centre, the library, computer suites and laundry facilities. There is also an HE study hub and Thyme Out convenience store on campus.

Rooms are allocated on a first come first served basis. Once you accept a place on a course at Writtle University College you will receive an offer letter to confirm your choice of room. A £250 damage deposit will be required at this point, to secure accommodation.



# ACCOMMODATION COSTS

To view our accommodation prices, please scan the QR code.



# YOUR HOME FROM HOME..

## ALL HALLS OF RESIDENCE BENEFIT FROM:

- Bedroom – with wardrobe, bed (some double), desk and chair, shelving, noticeboard, curtains, carpets
- Utilities
- Common room/snack kitchen – with toaster, hob, microwave & combi microwave, kettle, fridge
- Key facilities, including launderette, small convenience store, on-site starbucks, canteen and gym are all on campus
- Car parking
- Housekeeping in communal areas and bathrooms
- Free safe in each room for valuables
- A meal provision is included in boarding fees
- Free internet access
- Out of hours residential support team available



### Points to consider:

- All halls of residence are strictly non-smoking.
- A meal provision is included because our halls of residence are not legally classified as self-catering.
- You will sign an accommodation contract for the duration of the academic year, and this is non-negotiable once you have moved in.
- There may be periods when you choose to go home or attend study tours and your accommodation contract will still stand.
- The room is yours through the Christmas and Easter Breaks – we do not ask students to move out!
- your boarding fee is payable in three instalments each year.







"Living on campus is a really fortunate opportunity because of its convenient size including lots of useful facilities within walking distance from halls of residence and it is really beautiful; surrounded by several gardens. It is like a breath of fresh air every time (literally!)".

**Nadine**  
**Current student**

# Halls at Writtle University College

## 1) DENT HALLS

Dent has 41 single bedded rooms situated on two floors each with its own washbasin. There are two kitchen/common rooms equipped with a hob, microwave & combi microwave, fridge, freezer, toaster and kettle. There are showers and toilet facilities on each floor. All rooms have free wireless internet access and a safe.

## 2) HAMILTON HALLS

Hamilton is Writtle's newest hall of residence. It provides single ensuite accommodation for 50 students on two floors of a modern u-shaped development. The rooms are furnished to a high standard and the ensuite facilities include an enclosed shower unit. All rooms have free wireless internet access, safe and a TV aerial socket. Most bedrooms have a double bed. There are four common rooms well equipped with a hob, microwave & Combi microwave, fridge, freezer, toaster and kettle.

## 3) STRUTT HALLS

Strutt is a large three story hall with 46 rooms for single occupancy. There is a mixture of smaller standard rooms with single beds and larger single rooms with double beds which are suitable for students who have a lot of equipment, e.g., drawing boards. Strutt rooms do not have their own wash basins but there are convenient wash rooms, showers, and toilets on each floor. Kitchens and common rooms are equipped with a hob, microwave & combi microwave, fridge, freezer, toaster & kettle. All rooms have free wireless internet access and a safe.

## 4) HARVEY HALLS

The three Harvey halls are four storey buildings located in the centre of the campus and accommodate 22 students each. All bedrooms have their own washbasin, single bed and are comfortably furnished. The upstairs rooms are arranged in groups of six, with two toilets, a shower and kitchen/common room. A hob, microwave & combi microwave, fridge, freezer, toaster and kettle are available in each common room. The laundry is located in Harvey 1. All bedrooms have a single bed, safe and free wireless internet access.

## 5) TABOR HALLS

Tabor hall is a large modern building made up of three halls, two with single study bedrooms. Tabor 2 has extra-large rooms with double beds and extra storage. There are 117 places altogether and all rooms have the ensuite facilities of toilet, shower and washbasin. The rooms are comfortably furnished and the common rooms are equipped with a hob, microwave & combi microwave fridge, freezer, toaster and kettle. Every room has free wireless internet access and a safe.

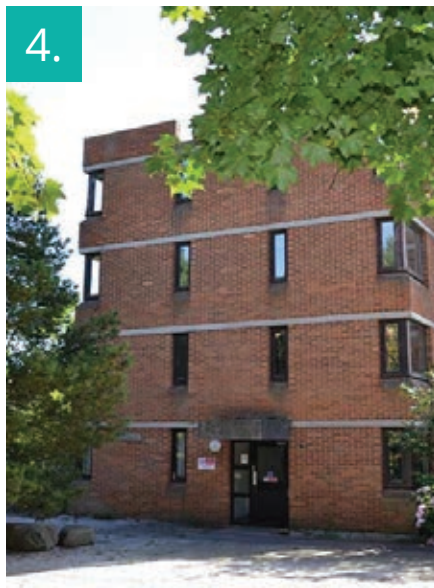
## 6) MADDISON HALLS

Three separate halls each house 17 students in single study bedrooms. All rooms have ensuite provision of toilet, washbasin and shower. There are television aerial sockets in each bedroom. All rooms in Maddison have a safe and free wireless internet access. Most bedrooms have a single bed. The kitchen is equipped with a hob, microwave & combi microwave, fridge, freezer, toaster, kettle, etc. Maddison Halls prove popular with international and mature students and are generally designated as quieter halls.

## 7) GILL HALLS

There are 37 single bedded rooms in Gill situated on two floors. The rooms do not have their own washbasins but there are washrooms, showers and toilets on each floor. The kitchen/common rooms have a hob, microwave & combi microwave, fridge, freezer, toaster and kettle. All rooms have free wireless internet access and a safe.





# SEE FOR YOURSELF

## **VIRTUAL ACCOMMODATION TOUR**

You can view our Halls online through our 360 virtual tour: [writtle.ac.uk/360/WUC/index.html](http://writtle.ac.uk/360/WUC/index.html)

## **FRIENDLY SUPPORT**

Our Accommodation Team are here to give you advice, help you apply and support you throughout your time at University, making sure you are happy and settled in your new home. If you have any questions, please call **+44 (0)1245 424212** or email [\*\*accommodation@writtle.ac.uk\*\*](mailto:accommodation@writtle.ac.uk)

## **HEAR FROM OUR STUDENTS**

Join some of our current students as they take you on a tour of the accommodation available at Writtle University College. Learn more about living on campus and being part of the WUC community.

[www.youtube.com/watch?v=UbguyB7IDKI](https://www.youtube.com/watch?v=UbguyB7IDKI)

## **NEXT STEPS: APPLYING FOR OUR ACCOMMODATION**

Our application for a place in halls can be made as soon as you have accepted Writtle as your first choice to study. You will be sent an email with details of our accommodation shortly after your offer letter. All students who intend to study on a full time course at Writtle are welcome to apply. Allocations for halls places will begin in April and all rooms are allocated on a first come first served basis.







